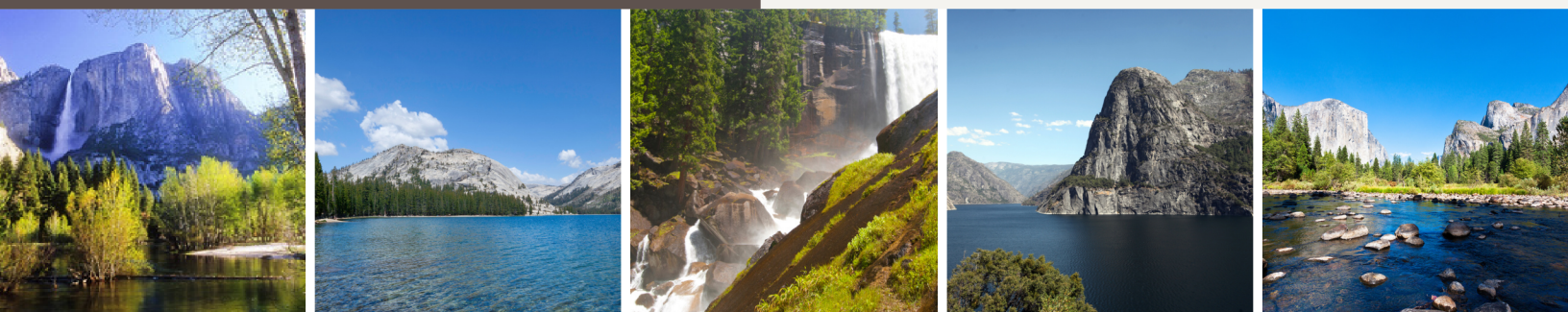


SUMMER 2024

Tours & Activities Calendar



TIME / LOCATION

ACTIVITY

DESCRIPTION

DAILY

10 am - 12 pm / Guest Lounge
1 pm - 4 pm / Guest Services

Free Kids Craft
Paid Activity

Join us for a self-guided craft for the kids
Choose from:

- Gold Excavation (\$5) - use a chisel to claim your bounty
- Geodes (\$10) - discover the crystals within a geode
- Terrarium Craft (\$10) - build your very own faux terrarium
- Animal Tracks (\$10) - imprint of a life-sized animal track

A treat with marshmallow, chocolate and graham cracker

7 pm - 9 pm / Guest Services

S'mores

MON

6 pm / Guest Lounge

BINGO!

Fun for the all ages, prize awarded to winner of each round

TUE

6 pm / Guest Lounge

Trivia

Test your knowledge, and win big

WED

5 pm - 8 pm / Guest Lounge

Ranger Talk

Interpretive Ranger Program

THU

6 pm / Guest Lounge

BINGO!

Fun for the all ages, prize awarded to winner of each round

FRI

6 pm / Guest Lounge

Nature Talk

Join us for an informative, all-ages talk about Yosemite

SAT

6 pm / Guest Lounge
9:30 pm / Guest Services

Trivia
Stargazing

Test your knowledge, and win big
\$35/adult, \$25/youth 15 & under, reservation required

SUN

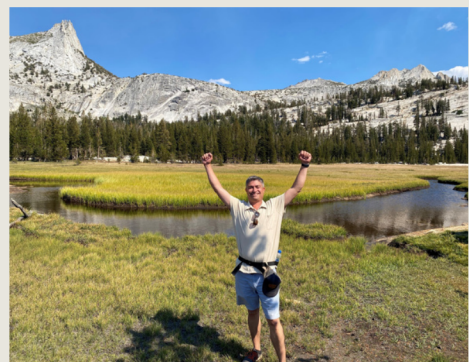
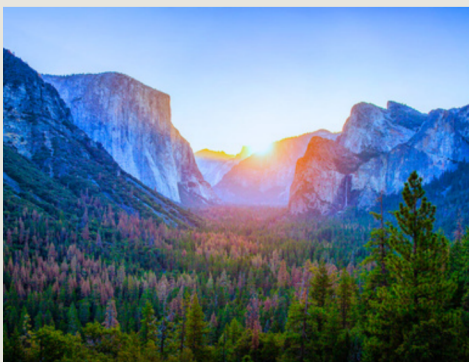
6 pm / Guest Lounge

Nature Talk

Join us for an informative, all-ages talk about Yosemite



Schedule and activities subject to weather, holiday offerings
and changing conditions. Visit Guest Services for updates.



FULL DAY

Wonders of Yosemite Hike & Tour*

One of the classic Yosemite tours, this is a full day's adventure to see Yosemite's icons – Yosemite Falls, Bridalveil Fall, Half Dome, El Capitan, Tunnel View – plus a 3-mile hike among Giant Sequoias.

Meets at Rush Creek Lodge; 9am-5:30pm; \$195 per adult, \$120 per youth (8-15 years)

Yosemite Valley & Glacier Point Tour*

Discover Yosemite's world-famous Glacier Point overlook and Yosemite Valley's iconic attractions! After soaking up Glacier Point's panoramic views, we'll meander through the Valley and possibly take a swimming break in the Merced River or enjoy a shaded picnic in beautiful El Capitan Meadow while watching climbers ascend the world's largest granite rock face!

*Meets at Rush Creek Lodge; 8:30am-4:30pm;
\$195 per adult, \$125 per youth (8-15 years)*

High Country Naturalist Tour*

This tour is a must for those who want to see what many insiders consider the premier area of the Park. Your expert naturalist guide will share incredible vistas, short walks and time to relax among the pristine Alpine meadows, rivers, granite domes and peaks of Yosemite's Tuolumne high country.

Meets at Rush Creek Lodge; 8:30am-5pm; \$210 per adult, \$135 per youth (4-15 years)

HALF DAY

Range of Light Yosemite Valley Tour*

Following the footsteps of John Muir, we visit the Valley's most famous and impressive wonders as well as its hidden secrets, with plenty of time to pause and relax while enjoying this delightful Yosemite Valley Tour.

Meets at Rush Creek Lodge; 9am-3pm; \$160 per adult, \$105 per youth (4-15 years)

Yosemite Valley Explorer Naturalist Hike*

Come explore the hidden trails of Yosemite Valley! Our gentle to moderate 4 to 5 mile hike winds around many of Yosemite's iconic wonders and provides splendid views of the valley's must-see sights!

*Meets at Rush Creek Lodge; 8:30am-2:30pm;
\$175 per adult, \$115 per youth (8-15 years)*

Tour pricing does not include the \$20 per adult admission fee, waived with Yosemite Annual Pass or America the Beautiful Pass.



TRY SOMETHING NEW

Yosemite Paint Party *

Grab your friends and family and join step-by-step instruction with our experienced and enthusiastic local artists during our Yosemite Painting Party. You'll leave with a one-of-a-kind Yosemite creation to take home and plenty of great memories.

Meets at Rush Creek Lodge, \$45 per person, See Guest Services for availability, advance Reservation Required.

Basket Weaving *

This class guides students through how to make a traditional California Native-style one-rod coiled basket with user-friendly raffia over a paper core, plus information about cultural practices of the Miwuk, Pomo, and Paiute.

Meets at Rush Creek Lodge, \$60 per person, ages 10+.

See Guest Services for availability.

Day Use Rentals

Bicycles - free

Hiking Stroller - \$35

Daypack - \$15

Baby Carrier - \$35

Trekking Poles - \$15

Climber Spotting Scope - \$30

Stop by the Guest Services for available items and further details.

Stargazing

Join us for a journey through the night sky! Far from light pollution, you'll be up close to nature's light show, gazing through our Dobsonian to Unistellar eVscope 2 Digital telescope. Observe stars, planets, constellations, and glimmering galaxies while learning about the mythology of the night sky.

*Advance reservation required – Start times vary
\$35 per adult, \$25 per youth (15 and under).*

ELEVATE YOUR EXPERIENCE

Whitewater Rafting the Merced River

Enjoy one of California's best whitewater rafting paddle-boat trips. This trip is suitable for first time rafters, depending on water levels. Class III.

Half and full day trips available, meeting location varies.

Whitewater Rafting the Tuolumne River

Experience the exhilaration of the finest whitewater rafting in the state on the beautiful Tuolumne River. Known for its rocky, technical drops. Class IV & V.

Full day trips available, meeting location varies.

Yosemite Flight Tours

Experience Yosemite from above with this once-in-a-lifetime flight over The Sierra Nevada wilderness. Enjoy a rare view with unmatched photography opportunities as you soar above the mountains.

For more information and to reserve, visit Guest Services.

One hour morning trips, \$249 per person (all ages), meet location is at the Groveland Airport.

Fly Fishing with Echo Co-Operative

Our knowledgeable outfitters get you away from Yosemite's main tourist attractions as you fly fish in pristine locations around our beautiful park.

Full day trips available. Advance reservation required.

***This activity meets at Rush Creek Lodge and Spa
34001 State Highway 120,
Groveland, CA 95321**



For more tour options, availability, and reservations visit Guest Services, visit FirefallRanch.com/Explore, or contact us at (209) 379-6820 or recreation@FirefallRanch.com